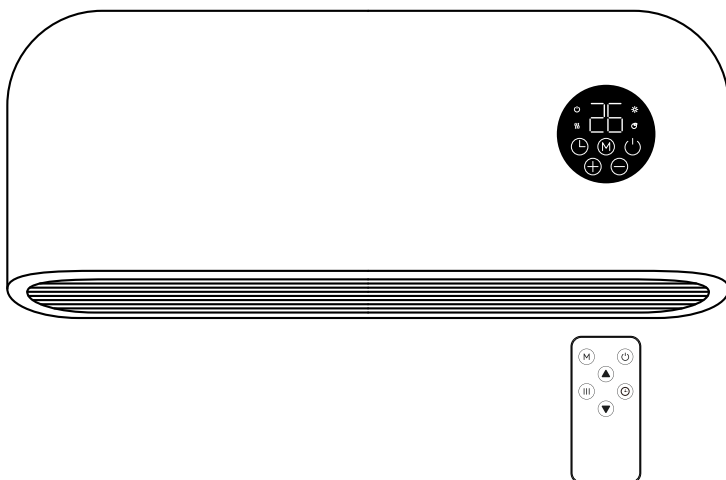


BEFORE USE:

Please read the instructions carefully. You must inspect the appliance including its cable and plug for any signs of damage. If the product is damaged, DO NOT USE and contact your supplier immediately for refund or replacement.

MYZEK®



V 2021-06

INSTRUCTION MANUAL FOR MODELS

WALL MOUNTED PTC FAN HEATER

MYOD606WH / MYOD606SV / MYOD606BK

| GENERAL INFORMATION

Thank you for choosing the Mylek LED weekly programmable Panel heater with Open window function. Please take time to carefully read and understand the entire instruction manual before using the product and then save it for future reference. We reserve the right for any errors in text or images and any necessary changes made to technical data. If you have any questions concerning operational or technical problems please contact our Customer Services on **0800 091 3171**.

| BEFORE USING THIS HEATER

When using electrical appliances, basic precautions should always be followed to reduce the risk of fire, electric shock, and injury to persons. This includes but is not limited to the following.

CAUTION

This appliance is not intended for use by persons (including children) with reduced physical, sensory or mental capabilities, or lack of experience and knowledge of the product. The appliance is to be operated by responsible adults only after reading and understanding these instructions. Children should be supervised at all times to ensure that they do not play with the appliance. Children under 16 years should not operate the unit or carry out maintenance and/or clean the unit. Any infirmed persons in the vicinity of the unit should be accompanied by a responsible and competent

able bodied adult. Remove the packing and make sure that the appliance is intact. If there is any doubt concerning the integrity of the unit do not use the appliance and contact our recommended after-sales service.

Do not leave any packaging materials within easy reach of children. Before switching on appliance check if the electrical voltage and frequency of the circuit correspond to those indicated on the appliance. Use the appliance only for the stated purpose, namely as a heater for domestic use. Do not use it for any other application as it could be dangerous.

| IMPORTANT SAFETY REQUIREMENTS

- This appliance can be used by children aged from 8 years and above and persons with reduced physical, sensory or mental capabilities or lack of experience and knowledge if they have been given supervision or instruction concerning use of the appliance in a safe way and understand the hazards involved. Children shall not play with the appliance. Cleaning and user maintenance shall not be made by children without supervision.
- Children of less than 3 years should be kept away unless continuously supervised.
- Children aged from 3 years and less than 8 years shall only switch on/off the appliance provided that it has been placed or installed in its intended normal operating position and they have been given supervision or instruction concerning use of the appliance in a safe way and understand the hazards involved. Children aged from 3 years and less than 8 years shall not plug in, regulate

and clean the appliance or perform user maintenance.

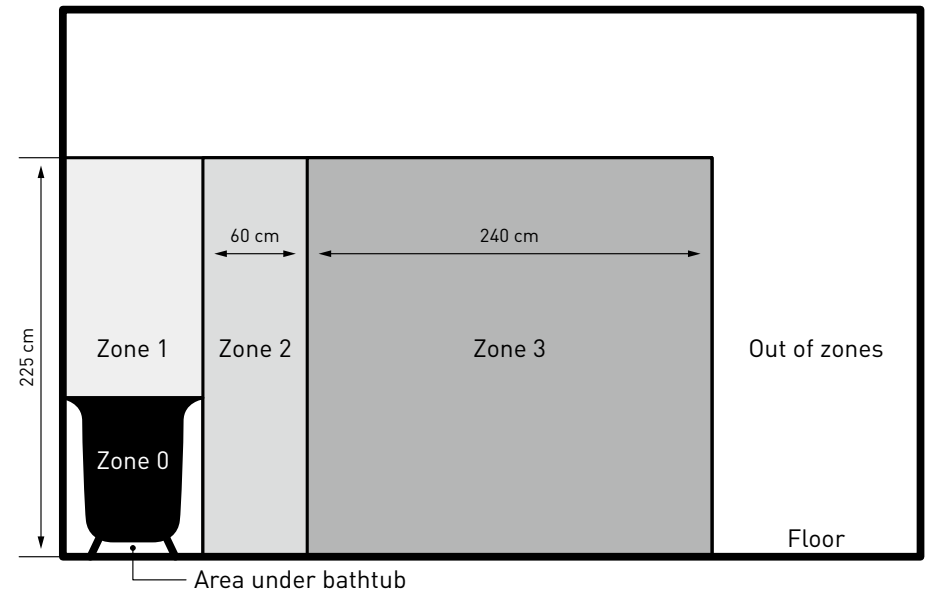
- CAUTION - Some parts of this product can become very hot and cause burns. Particular attention has to be given where children and vulnerable people are present.
- If the supply cord is damaged, it must be replaced by the manufacturer, its service agent or similarly qualified persons in order to avoid a hazard.
- CAUTION: In order to avoid a hazard due to inadvertent resetting of the thermal cutout, this appliance must not be supplied through an external switching device, such as a timer, or connected to a circuit that is regularly switched on and off by the utility.
- The heater must not be located immediately above a socket-outlet.
- Means for disconnection having a contact separation in all poles must be incorporated in the fixed wiring in accordance with the wiring rules.
- For correct installation on the wall, thanks to refer to 'Installation on wall' part.
- Fixed heaters are to be installed so that switches and other controls cannot be touched by a person in the bath or shower.
- The heater must be installed at least 1.8 m above the floor.
- **WARNING:** The heater must not be used if the glass panels are damaged.

WARNING: this product shall be installed in Zone 3 only according the national wiring rules.

Note: The drawing below is for reference only.

If installed in a bathroom this unit must be installed by a qualified electrician.

In the case as of buildings room, a room receiving a bath or a shower and socket-outlets lower or equal to 32 A the circuit corresponding must be protected by a device with differential residual current (RCD) lower or equal to 30 mA.

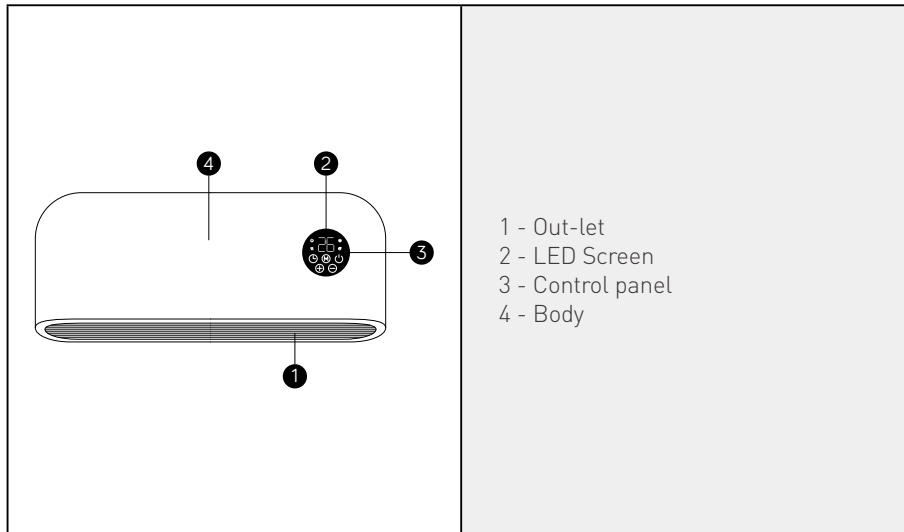


THIS PRODUCT IS FOR ROOM HEATING
FOR HOUSEHOLD USE ONLY

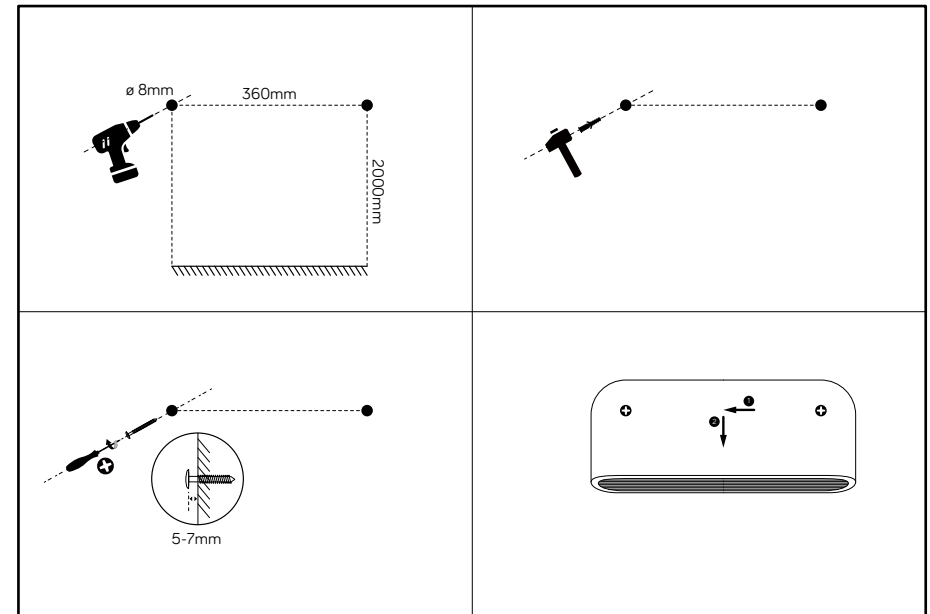
| SPECIFICATIONS

Model No.	RATED VOLTAGE	RATED POWER
MYOD606WH	AC230V, 50-60Hz	2000W
MYOD606SV	AC230V, 50-60Hz	2000W
MYOD606BK	AC230V, 50-60Hz	2000W

| STRUCTURE AND PARTS



| INSTALLATION ON THE WALL



1. Drill holes on the wall according to the above instruction.
Warning: Be sure to keep the safety distances as shown on the above drawing.
2. Fit the plastic wall plugs into the drilled holes and fit the screws.
3. Hang the unit on the screws gently.
Warning: Before using the heater, make sure it's mounted tightly on the wall.

| CONTROL PANEL AND SCREEN

	<p>5 Button:</p> <ul style="list-style-type: none"> Standby Increase function Decrease function Mode selection Timer off function <ul style="list-style-type: none"> 1 Standby: on/off 2 Heating status 3 Comfort mode 4 ECO mode
	<ul style="list-style-type: none"> 1 Standby: on/off 2 Mode selection 3 Increase function 4 Decrease function 5 Timer 6 Power setting

The remote control operates the same functions as the unit display and also with the addition you can choose the unit Fan mode by pressing III on the remote to select H0 for Fan Mode, H1 for 1000W Heat Mode and H2 for 2000W Heat Mode.

| HOW TO USE

- Plug the appliance into a AC 230V 50-60Hz socket and press the on/off switch located on the back cover, you will hear a beep sound. The power indicator light shows on.
 - Press to turn on the heater, which is in factory default setting when used for the first time.
 - Factory default:
 - Heating mode: Comfort mode
 - Target temperature setting: 22°C
 - Window open function: Off
 - Timer: Off
- (If default settings are different, it will simply be because the unit has been quality tested after production).
- To stop the heater working, press to turn off the heater, the indicator will display, the heater will blow cool air for around 60 seconds to discharge heat and protect the element.
 - Unplug the product when it's not in use.

| TEMPERATURE SETTING

- The screen will display the target set temperature, press and to set directly to your preferred setting.
- Comfort mode or Comfort mode in P1/P2/P3: Press and to set the temperature from 10-35°C.
- ECO mode or ECO mode in P1/P2/P3: Press and to set the temperature from 6-31°C.
- Note: ECO mode=Comfort mode - 4°C

| CLOCK AND DAY OF WEEK SETTING

- Press button for 3 seconds to enter clock and day of week setting.
- The screen will display "□", press and to select the current day from 1-7.

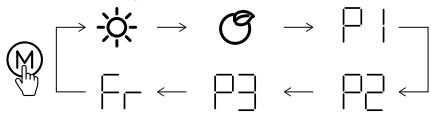
1	Monday	2	Tuesday
3	Wednesday	4	Thursday
5	Friday	6	Saturday
7	Sunday		

- Press to confirm day setting and enter the clock hour setting, with the screen display: .
- Press and to set the current hour from 00-23
- Press to confirm hour setting and enter the minute setting, with the screen display: .
- Press and to set the current minute
- Press to confirm all settings

Note: The clock and calendar will be reset to factory default if without power supply.

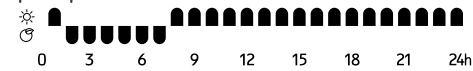
HEATING MODE

- Press to enter mode selection. By pressing , heating mode runs in a continuous cycle as below:

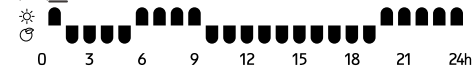


- Comfort mode: Press and to set the temperature from 10-35°C.
- ECO mode: Press and to set the temperature from 6-31°C.
Note: ECO mode=Comfort mode - 4°C
- Anti-frost mode: the screen will display . The target temperature is 7°C. This temperature cannot be adjusted.
- P1/P2/P3: Pre-set heating program.
Note: If the clock and day setting are not set correctly P1/P2/P3 will not operate to the current time. It is advised to set day and clock setting in advance.

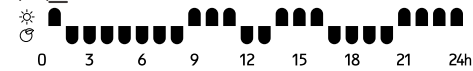
: (Monday-Sunday) Pre-set program, cannot be adjusted.



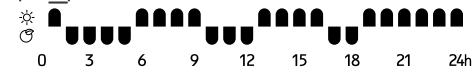
: (Monday-Friday) Pre-set program, cannot be adjusted.



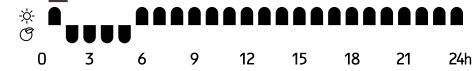
: (Saturday-Sunday) Pre-set program, cannot be adjusted.



: (Monday-Friday) Adjustable program



: (Saturday-Sunday) Adjustable program



adjustable program setting

1. Press until the mode displays. Press again for 3 seconds until displays for the day setting.
2. Press or to choose the day between - (Monday-Sunday). Press to confirm the day you wish to set.
3. The screen then displays for the hour setting, press or to set from (00-23). For each hour press to choose the heating mode you require for every hour, if you choose Comfort mode symbol will display or ECO mode symbol will display or anti-frost mode where no symbols will display which means the heater will only operate if the temperature drops to 7 degrees.
4. When all hours have been set to your requirements up to 23 hours press the button and the unit will display the next day to set. Press to confirm the next day

to set and repeat the the process for point 3 above for this day and every day from - .

- After setting and heating mode up to hour 23, press to revert back to program, your unit is now set to your requirements and will operate to your set requirements whilst showing the on the display.

I POWER SETTING

The power can only be set in remote control, press to set:

: Fan mode; : 1000W Heat Mode; : 2000W Heat Mode

I COUNTDOWN TIMER FUNCTION

Press one time, the screen display "h" and keeps flashing, keep pressing , the screen will display 2h – 4h – 8h -0h in a cycle. Or press and to set timer from 0-9 hours.

I OPEN WINDOW FUNCTION

- To turn on open window function, press together and , the screen will display , after 3 seconds, the screen will display the set temperature.
- To turn off open window function, press together and , the screen will display , after 3 seconds, the screen will display the set temperature.

I MAINTENANCE

- Always disconnect the appliance and let it completely cool before any maintenance.
- Use a vacuum cleaner to remove dust on grilles.
- Clean the outside of the unit with a damp cloth and then dry it with a dry cloth. Never immerse the unit in water, nor let water drip into the unit.

I STORING

- Always disconnect the appliance, let it completely cool and clean it before storing.
- If you do not use the device for a long period, put back the unit and the instruction manual to the original carton and store in a dry and ventilated place
- Do not place any heavy items on top of carton during storing as this may damage the appliance.

Information requirements for electric local space heaters

Model identifier(s): MYOD606WH / MYOD606SV / MYOD606BK							
Item	Symbol	Value	Unit	Item	Unit		
Heat output				Type of heat input, for electric storage local space heaters only (select one)			
Nominal heat output	P _{nom}	2.0	kW	Manual heat charge control, with integrated thermostat	[no]		
Minimum heat output (indicative)	P _{min}	N/A	kW	Manual heat charge control with room and/or outdoor temperature feedback	[no]		
Maximum continuous heat output	P _{maxc}	2.0	kW	Electronic heat charge control with room and/or outdoor temperature feedback	[no]		
Auxiliary electricity consumption				Fan assisted heat output			
At nominal heat output	eI _{max}	0	kW	Type of heat output/room temperature control (select one)			
At minimum heat output	eI _{min}	0	kW	Single stage heat output and no room temperature control	[no]		
In standby mode	eI _{sb}	0,000	kW	Two or more manual stages, no room temperature control	[no]		
				With mechanic thermostat room temperature control	[no]		
				With electronic room temperature control	[no]		
				Electronic room temperature control plus day timer	[no]		
				Electronic room temperature control plus week timer	[yes]		
				Other control options (multiple selections possible)			
				Room temperature control, with presence detection	[no]		
				Room temperature control, with open window detection	[yes]		
				With distance control option	[no]		
				With adaptive start control	[no]		
				With working time limitation	[yes]		
With black bulb sensor	[no]						
Contact details	Hygiene Supplies Direct Limited, Ground floor, Tayson House, Methley Road, Castleford WF10 1PA						



This marking indicates that this product should not be disposed with other household wastes throughout the EU. To prevent possible harm to the environment or human health from uncontrolled waste disposal, recycle it responsibly to promote the sustainable reuse of material resources. To return your used device, please use the return and collection systems or contact the retailer where the product was purchased. They can take this product for environmental safe recycling.

The importer retains his right to make changes in appearance and completeness of the item without preliminary notification to the customer.
The item is for indoor use only.
The manufacturer does not assume any liability for any damage caused directly or indirectly by not following this instruction manual, general safety rules, or interference in the construction of the product.

SERVICE WARRANTY

Hygiene Supplies Direct guarantees the product free from defects in materials and workmanship for a period of 1 year from date of purchase. Should this unit be operated under conditions other than those recommended, at voltages other than the voltage indicated on the unit, or any attempts made to service or modify the unit, then the warranty will be rendered void. The product you buy may sometimes differ slightly from illustrations. This warranty is in addition to, and does not affect, your statutory rights. If you have any problems with this product, please call our Help Desk on **0800 091 3171** or email: sales@hygienesuppliesdirect.com

MYLEK[®]

YESSS Electrical, YESSS House, Normanton, WF6 1TN
declares that the Mylek Heaters are exclusively manufactured
and imported for Hygiene Supplies Direct Ltd.